

## **ATTACHMENT B**

**ARGYLE STREET IMPROVEMENTS –  
LOWER FORT STREET TO KENT STREET –  
CONSULTATION PANELS**

# Project Overview

## Introduction

Argyle Street is the main street of Millers Point. It is lined with community facilities, parks, cafes and shops. It contains significant cultural, landscape and heritage features and provides an important meeting place for local residents.

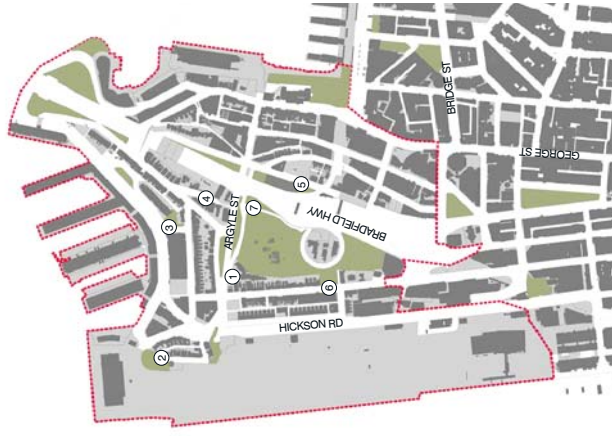
Argyle Street will soon become the primary east-west pedestrian connection between Circular Quay and the new Headland Park at Barangaroo via the entrance at Munn Reserve.

The Argyle Street Works were identified as a priority project in the Harbour Village North Public Domain Study. The works will accommodate increased visitation to the area whilst maintaining the character, heritage and identity of Millers Point.

## Design Elements / Components

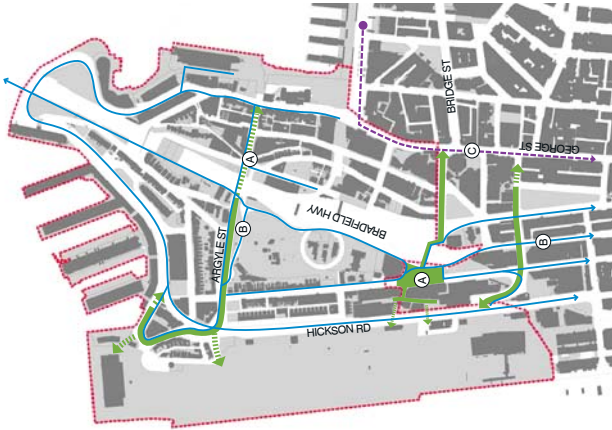
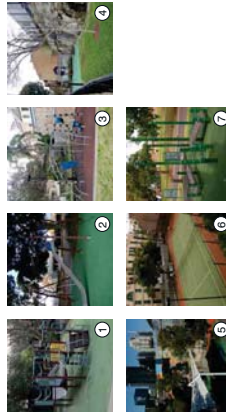
- Upgrade the footpath along Argyle Street with new paving to provide a flat, even surface.
- Widen the footpath next to Argyle Place Park on Lower Fort Street to reduce the width of the intersection.
- Convert the bus turning circle in front of Abraham Mott Hall and Harry Jensen Community Centre into a small park, pending negotiations with Transport for NSW and the State Transit Authority on the relocation of the buses.
- Retain all bus stops along Argyle St, Argyle Place and Lower Fort Street. Relocate the bus shelter outside Abraham Mott Hall so that it aligns with the new street edge.
- Create a new play area outside the Abraham Mott Hall for local and visiting families.
- New lighting and seating.

## Local Area Context / Harbour Village North



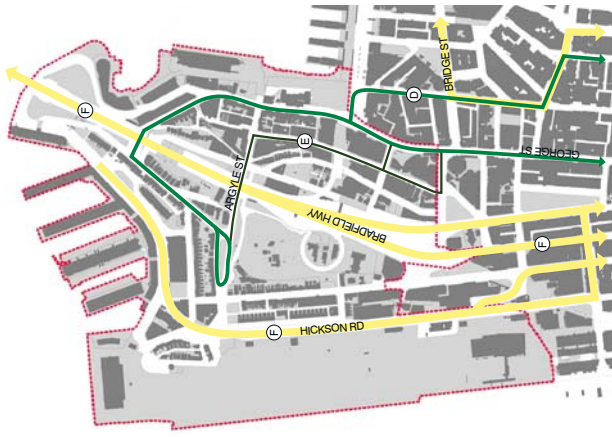
### CURRENT LOCAL PLAY & RECREATION PROVISION

1. Abraham Mott Hall: Play equipment to suit toddler and pre-school age. Partially fenced.
2. Cyne Reserve: Fixed play equipment with climbing structures, boat and slide to suit school-aged children. Non-fenced.
3. Pottinger Park \ The Peddock: Fixed climbing frame to suit school aged children. Park partially fenced.
4. Timly Avenue: Climbing structure and swing set to suit school aged children. Secure fenced.
5. King George V Recreation Centre: Indoor and outdoor multi-use recreation courts and secure playground for multiple ages (controlled access).
6. Tennis Court: The Observatory. Hotel tennis court, Kent St.
7. Exercise equipment: Fixed adult exercise equipment



### ACCESS AND CONNECTIONS

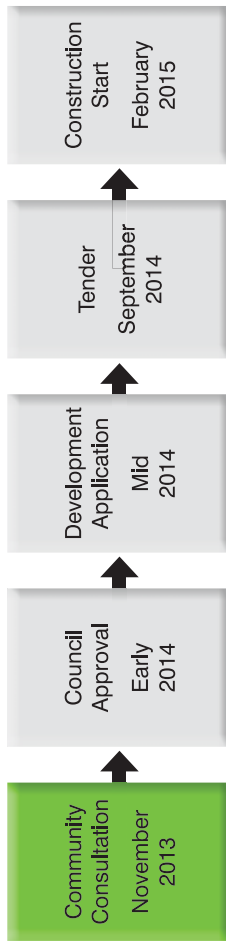
- A. Key streets in Harbour Village North, including Argyle Street as east west pedestrian route connecting from The Rocks to Headland Park at Barangaroo
- B. Cycle network
- C. Future Light Rail Corridor



### BUS SERVICES

- D. Bus Services to Millers Point / Routes 431, 433, 311
- E. Weekend diversion of 431, 433, 311 bus services for The Rocks Markets, Friday 8pm to Monday 12:30am.
- F. Planned City Centre Key Bus Corridor / Draft Sydney City Centre Access Strategy, 2013

## Timeline



### Historic Significance

Millers Point has high heritage value. This is reflected in the State Heritage Register listing of Millers Point and Dawes Point Village Precinct (SHR No. 1662). The suburb also contains numerous individually listed items including buildings, parks and streetscape items.

- Key factors that have influenced the landscape and built form character over time:
  - The sandstone cliffs and cuttings that were created when the area was quarried, and when access to Observatory Hill was developed;
  - The wide roads that were created in the late 19th Century and early 20th Century to accommodate the tram system;
  - Fig tree plantings in the late 1800s;
  - Creation of Argyle Place Park. In the 1860's, the Merriman family made many improvements including extensive plantings and enclosure of the park by a dwarf wall and palisade fence.
  - Construction of the Abraham Mott Hall (formerly the Coal Lumpers' Hall) in the early 1900s; and
  - Construction of the community centre in the 1950s. It is associated with the prominent state politician and former Lord Mayor Harry Jensen.



SYDNEY 1836 / MAP EXTRACT  
Argyle Street connecting from Sydney Cove to Fort Street.



SYDNEY 1888 / MAP EXTRACT  
Argyle Street connecting from Sydney Cove wharves to Darling Harbour wharves.



PHOTO 1860.  
Turning bay for trams in front of Hall with current shelter. Small pocket park with play area associated with the former Coal Lumpers' Hall (now Abraham Mott Hall) evident on the left.



PAINTING BY FREDERICK TERRY, PRESUMED LATE 1850's  
View to Argyle Street from Observatory Hill with quarry excavation on left.



PHOTO DATE UNKNOWN  
Argyle Place Park with palisade fencing.

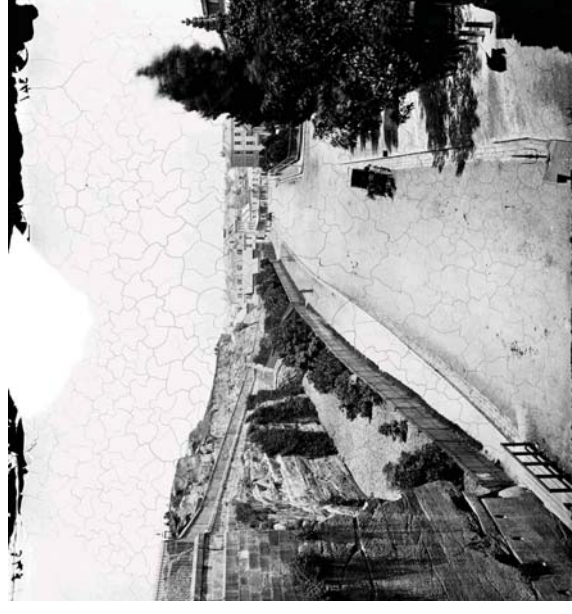


PHOTO DATE UNKNOWN  
Argyle cut with Merlins photographic cart (photo by American & Australasian Photographic Company). Shows original straight alignment of Argyle St (no tram turning circle).



AERIAL 1943.  
Fig Tree planting evident in Argyle Place Park. Turning bay for trams in front of Hall.



PHOTO 1862.  
Tram in turning circle at Millers Point terminus. Sandstone cutting to Observatory Park behind.



### KEY DESIGN PRINCIPLES

- A. Emphasise pedestrian amenity along the Argyle Street south side footpath
- B. Reinforce the park quality of the precinct with simple grassed areas and large evergreen tree planting within the park edges
- C. Integrate and improve access to the Harry Jensen Community Centre and Abraham Mott Hall
- D. Maintain historical fabric, including sandstone wall and steel palisade fence, tramshed, kerb alignments and views to the sandstone cuttings and escarpment behind.
- E. New lighting along Argyle Street (maintaining existing heritage gas lamps).



### VIEW A

View along Argyle Street towards Watson Rd intersection and new pocket park.



### Project area

Heritage bus shelter outside Abraham Mott Hall moved to align with new footpath and park

Existing sandstone kerb to be retained in new pavement

### New kerb alignment with pram ramps

Watson Rd intersection: Investigations are being carried out to further improve pedestrian safety and amenity along Argyle Street

Temporary location of bus layover. Final location to be determined with Transport for NSW and the State Transit Authority. Loss of four (4) 2P parking spaces.

Existing bus stop retained

Wider footpaths and new pram ramps (both sides of Lower Fort Street)

Brass strip in footpath to show location of original kerb line.

Upgrade footpath to provide a flat, even surface

Lighting upgrade to Argyle Street

Existing picnic shelter replaced with open sided shelter to improve views to sandstone escarpment

Existing *Celtis australis* street trees retained. Future replacement of trees may be required if tree health declines further

Existing bus drop off and layover for 4 buses retained. Bus shelter removed

Public toilet on Watson Road retained

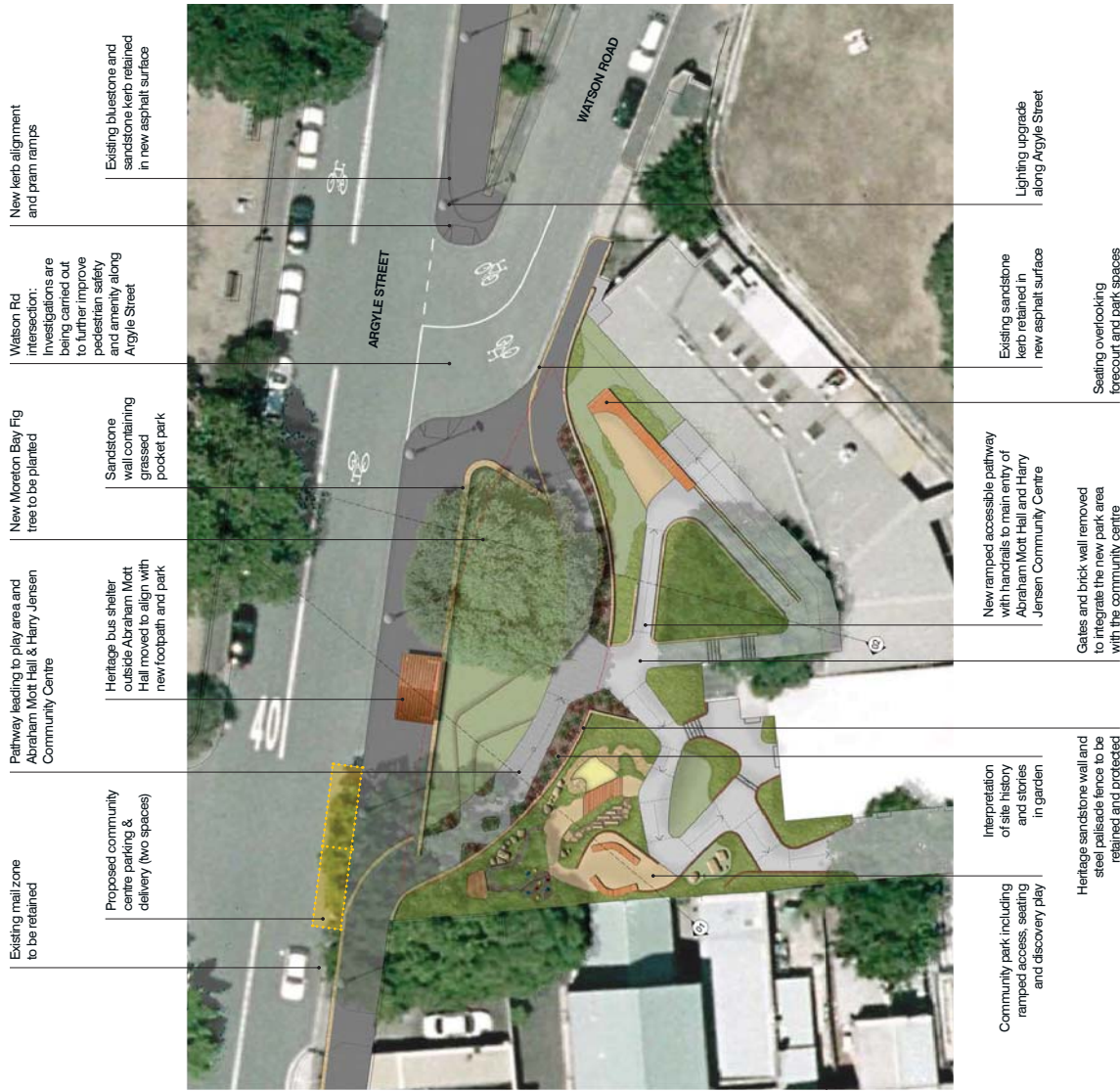
Two *Celtis australis* street trees removed

New accessible ramp to main entry of Abraham Mott Hall and Harry Jensen Community Centre

New children's play space outside Abraham Mott Hall

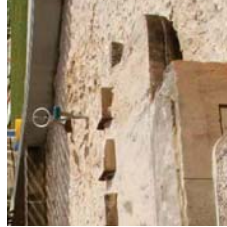
Convert bus turning circle in front of Abraham Mott Hall and Harry Jensen Community Centre into a small park, pending negotiations with Transport for NSW and the State Transit Authority

Upgrade footpath to provide a flat, even surface



### Discovery Play Space

The play area in front of the Abraham Mott Hall is designed to offer a place to explore and play through discovery and interaction, appealing to a wide range of age groups. The discovery play space uses natural materials as elements to scramble, jump, and climb on. These spaces offer a unique tactile, playful environment to delight and intrigue, complementing the active playgrounds provided elsewhere in the local area.



Sand pit with 'digger' and enclosed by sandstone pieces.  
Precedent: Pirrama Park, Pymont



Climbing between raised timber stepping logs.



Climbing over natural sandstone blocks.



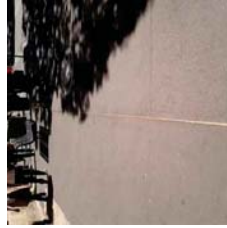
Garden maze with planting and soft pathways.

### Materials

The materials have been selected to reflect the character of the Harbour Village North area.



Heritage kerb retained in new footpath extension  
Precedent: Cumberland Street



Brass strip in new footpath to show location of original kerb  
Precedent: George Street (The Rocks)



Park pathway using basalt setts.  
Precedent: Sydney University



Sandstone wall



Fig Tree  
Ficus rubiginosa.



Site history expressed through interpretive art



Signage panels interpreting the history of the local area.

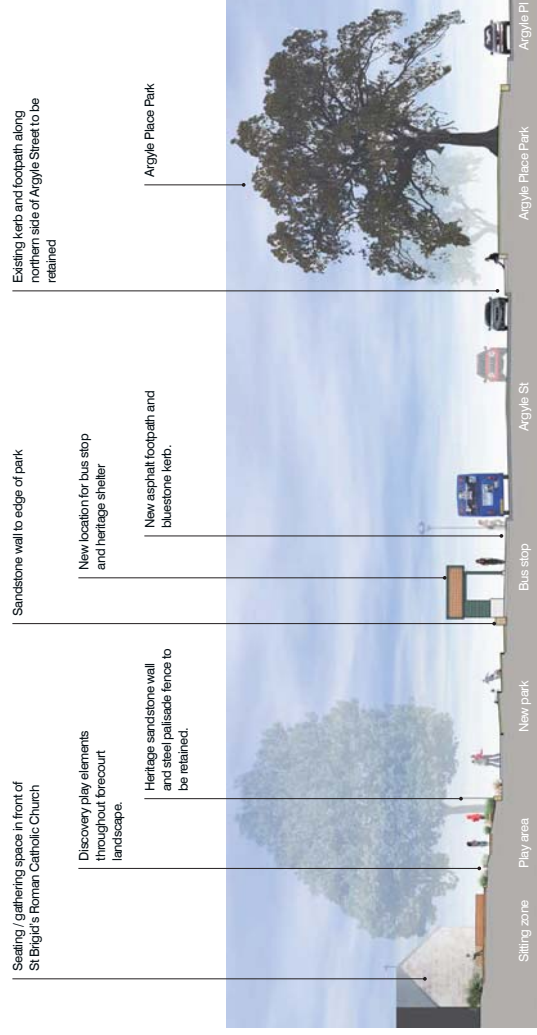


Diverse planting outside community centre.

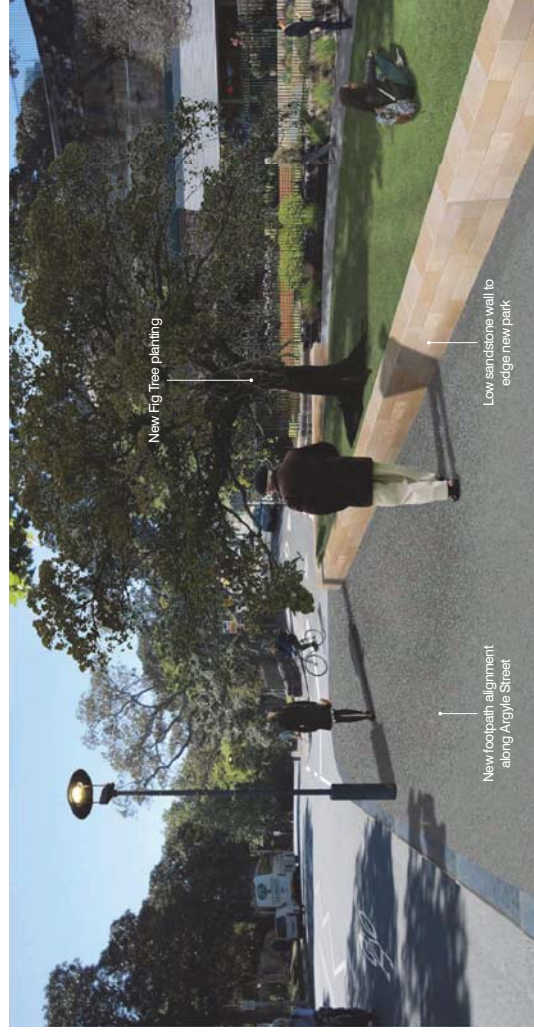
DETAIL PLAN 1:200

# Concept Design

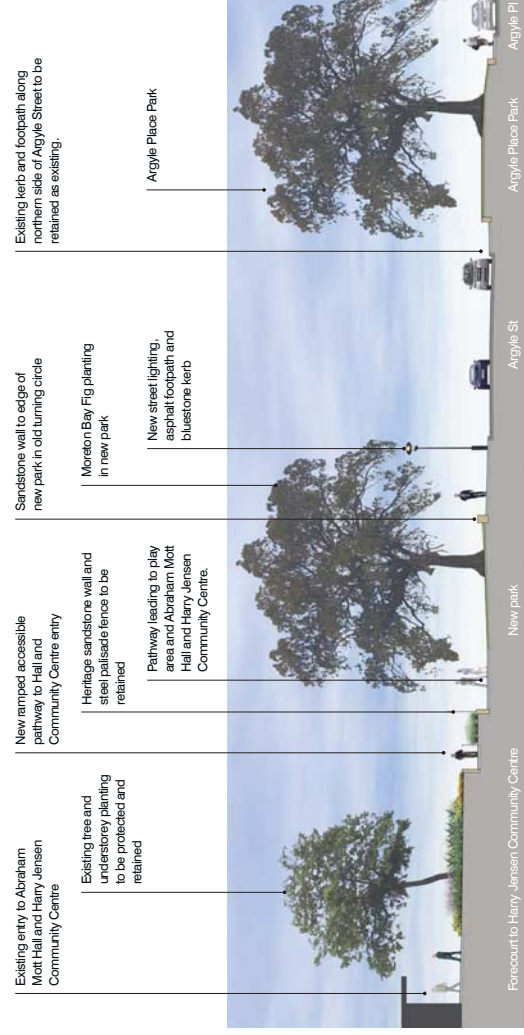
## Argyle Street Upgrade / Lower Fort Street to Kent Street and Community Playground Concept



**SECTION THROUGH PLAY AREA TO PARK**



**VIEW B**  
View east along Argyle Street towards Watson Rd Intersection.



**SECTION THROUGH HALL ENTRY TO PARK**



**VIEW C**  
Internal view of pocket park looking towards the Hall entry.